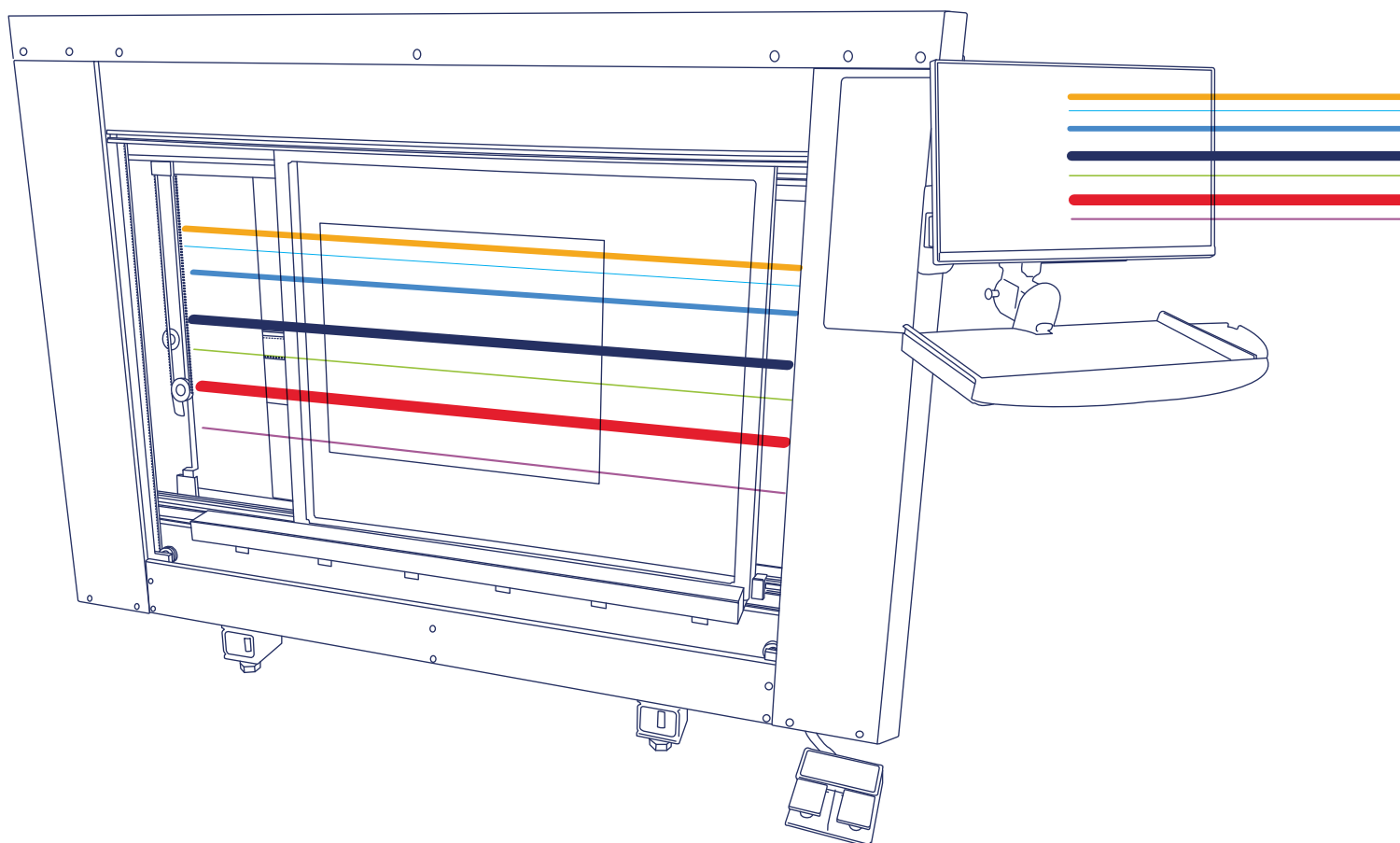


LTS 6080-VF

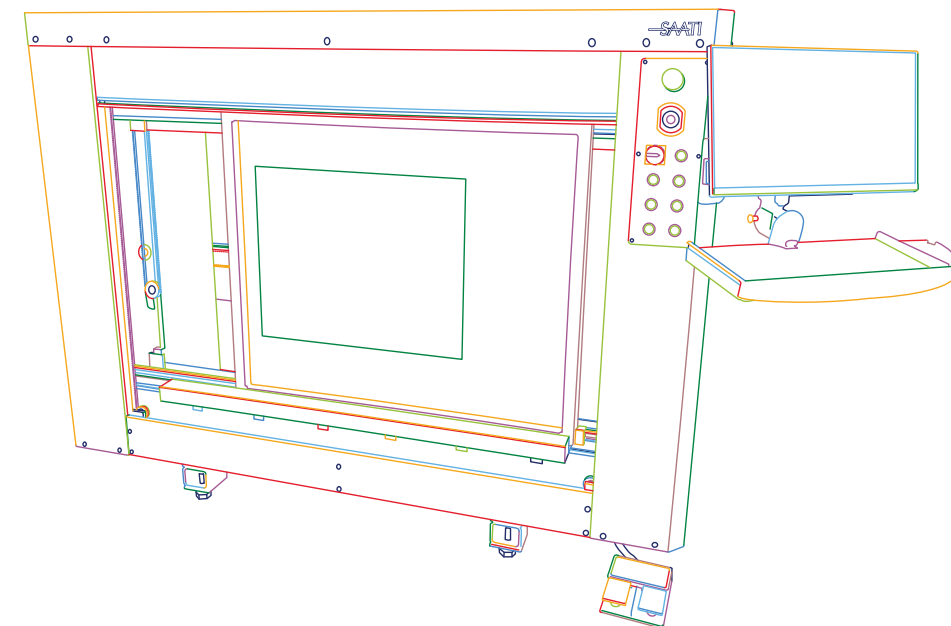
The Advanced Direct Laser CtS Imaging & Exposure System



—SAATI
We cross-innovate

Table of Contents

Introduction	02
Features	04
Physical Specifications	06
Laser Characteristics	08
Workflow Capabilities	10
Software Capabilities	14
Alternative LTS Models	22

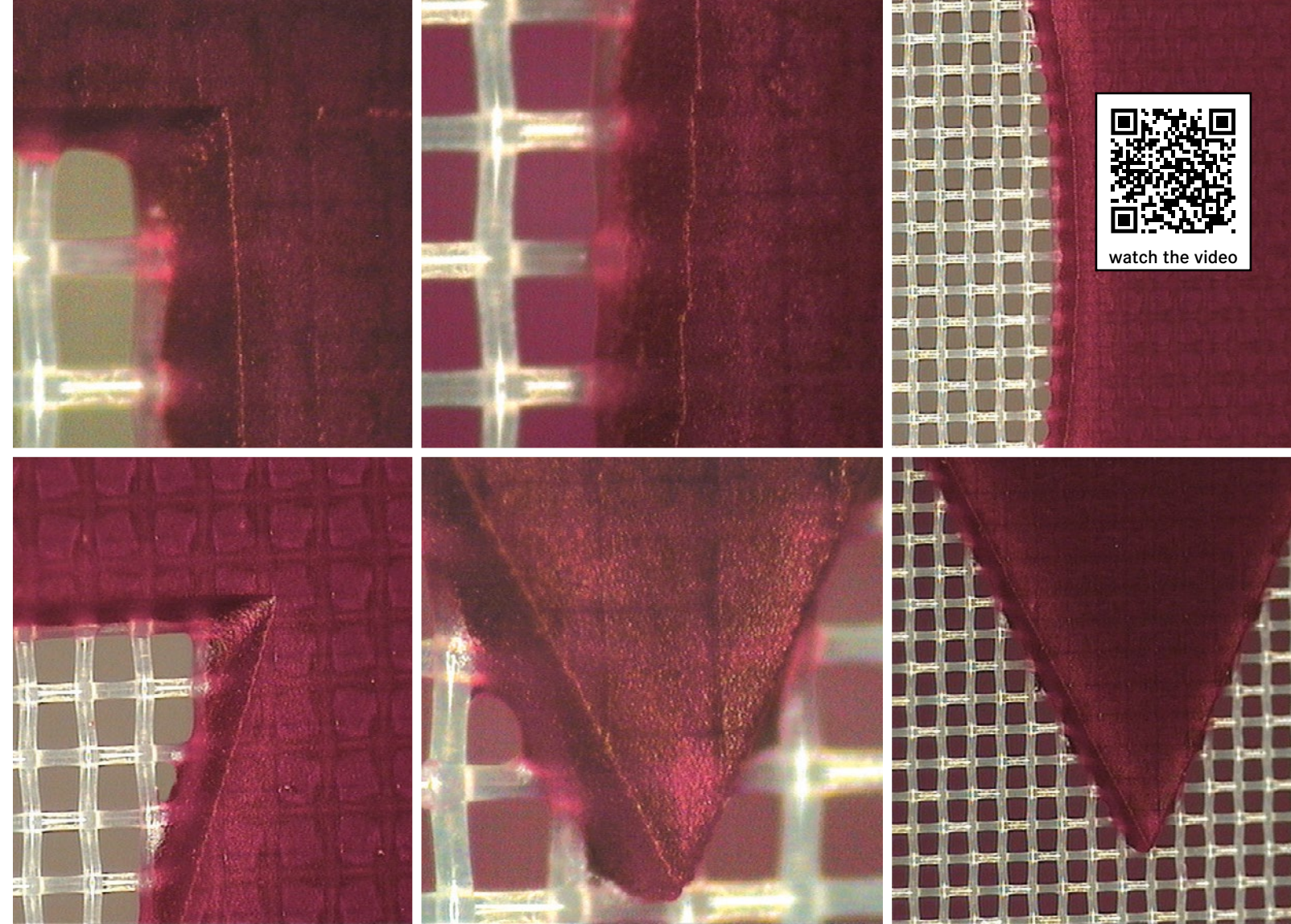


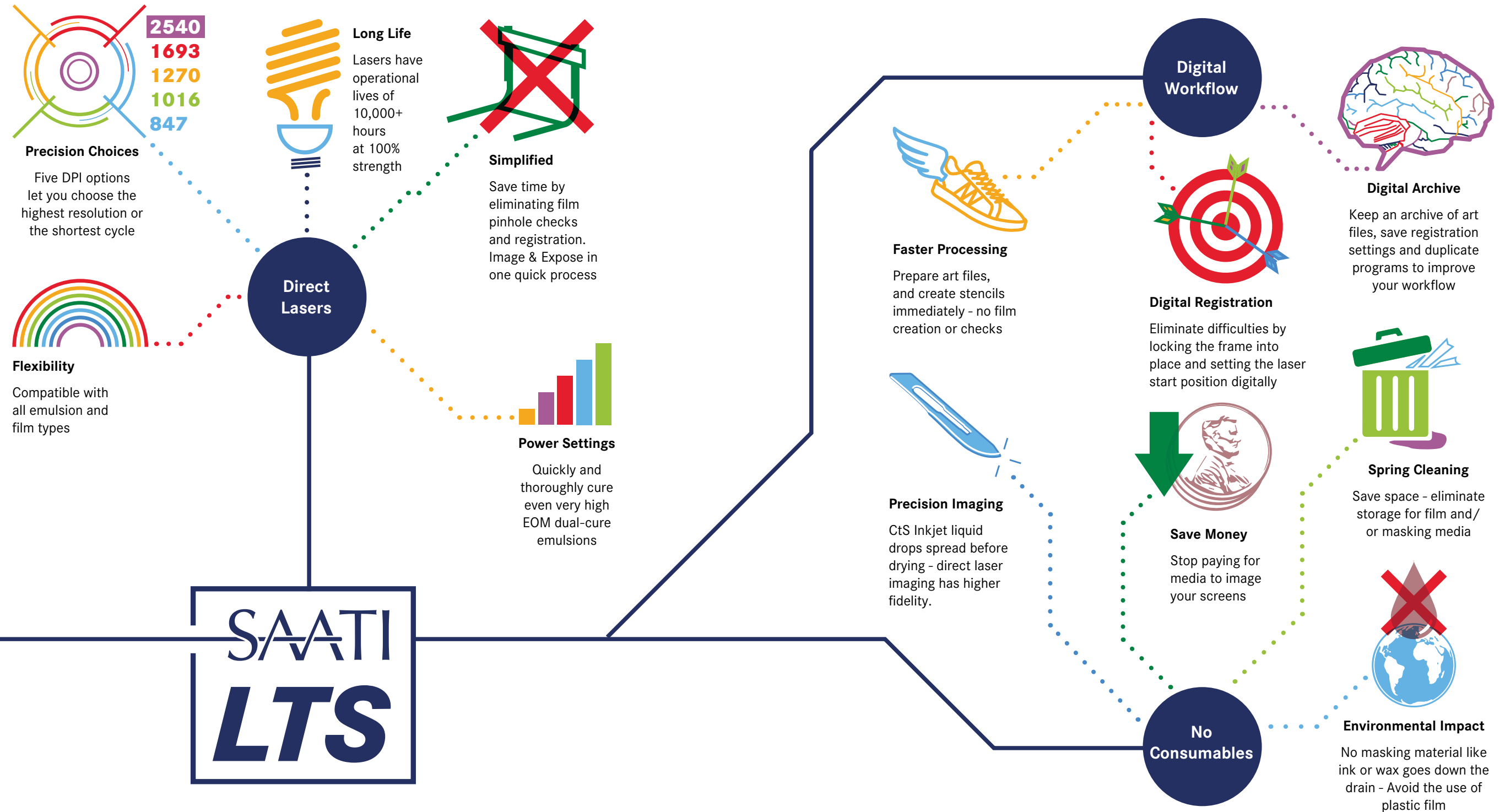
We cross-innovate

The LTS Series: Introducing State of the Art Laser Stencil Making from SAATI

SAATI has decades of experience in manufacturing and commercializing precision woven mesh, emulsion, stencil films and chemicals. Knowledge we have gained from our customers has been compiled, analyzed and applied to produce a full range of screen making equipment, and the jewel of this collection is the LTS Series.

The SAATI LTS range takes into account the contemporary needs of stencil makers with an eye towards future challenges that will demand more efficient and precise results. SAATI LTS machines are Direct Laser CtS Image & Exposure units. They surpass the results of other CtS systems, and simultaneously provide enhancements to time and money spent producing stencils, as well as reducing your ecological footprint.



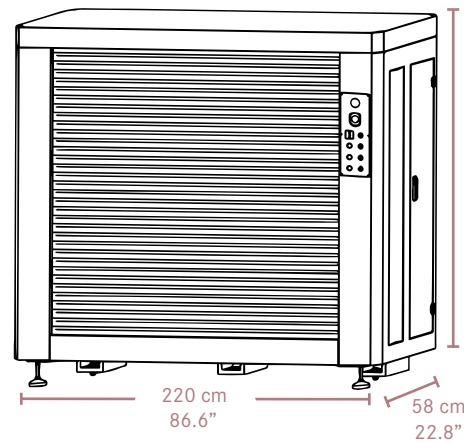


SAATI LTS 6080-VF

Physical Specifications & Characteristics



Dimensions



Characteristics

Glass-free vertical loading and frame lock system ensure accurate, easy screen placement and reduced pinholes

Solid metal construction provides a vibration free stencil making platform while maintaining a smaller footprint than other CtS machines

Easy to use pedals engage and disengage the frame clamps

Weight



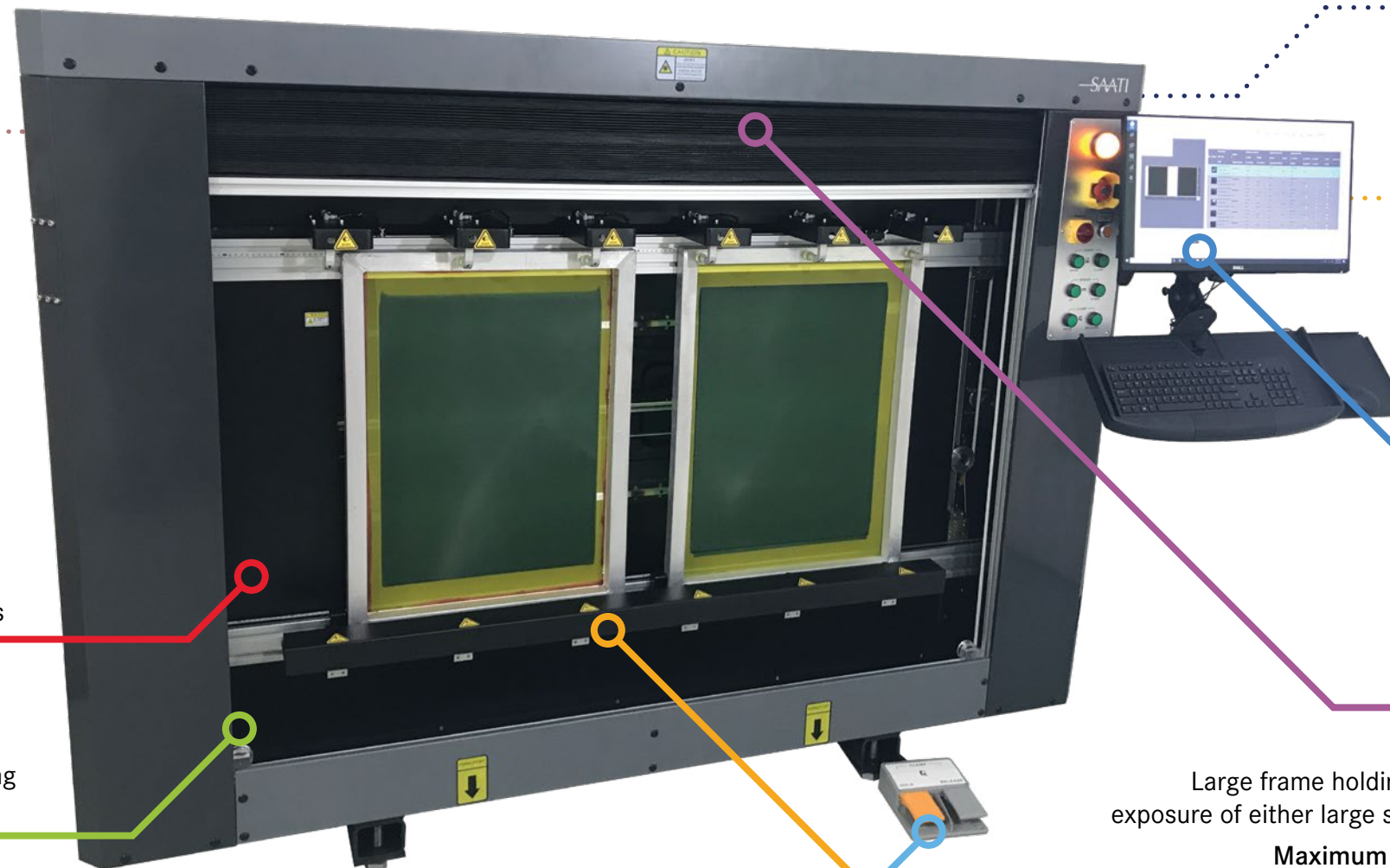
Power



110V
standard

240V
with adapter

800W
consumption



Touch screen workflow

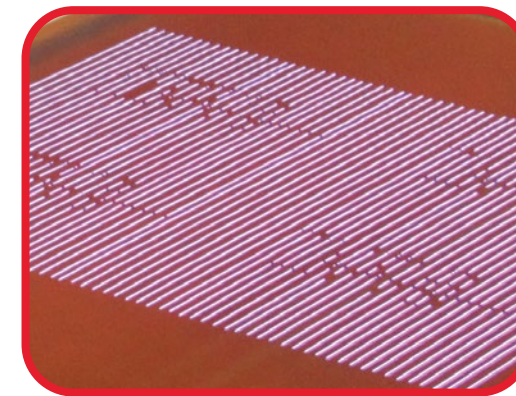
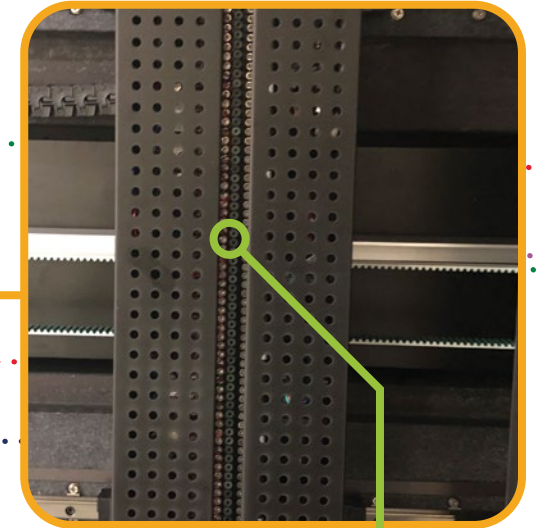
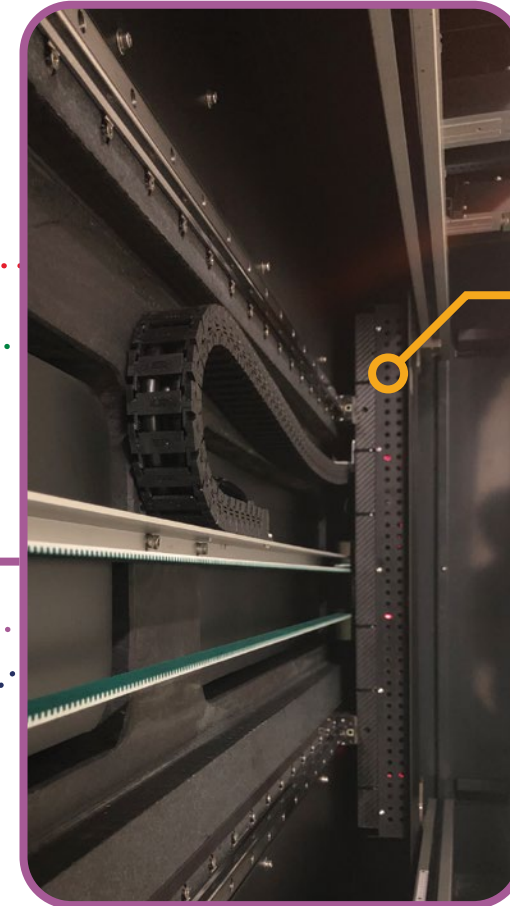
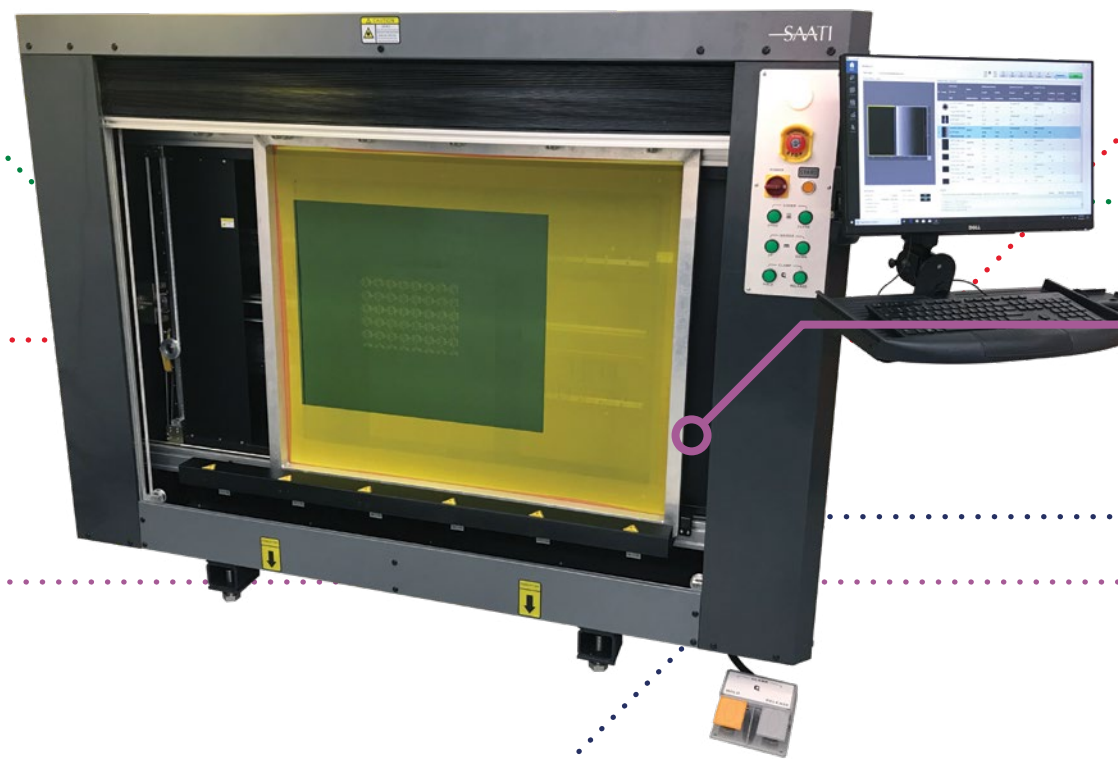
Motorized safety shutter

Large frame holding area enables simultaneous imaging & exposure of either large screens, or 1 or 2 standard size screens

Maximum Image Size: 60x120 cm | 23.6 x 47.2"
Max Frame Sizes: 1 Screen up to 104 x 167 cm | 41 x 66"
or 2 Screens up to 58 x 78 cm | 23 x 31"

SAATI LTS 6080-VF

Laser Characteristics



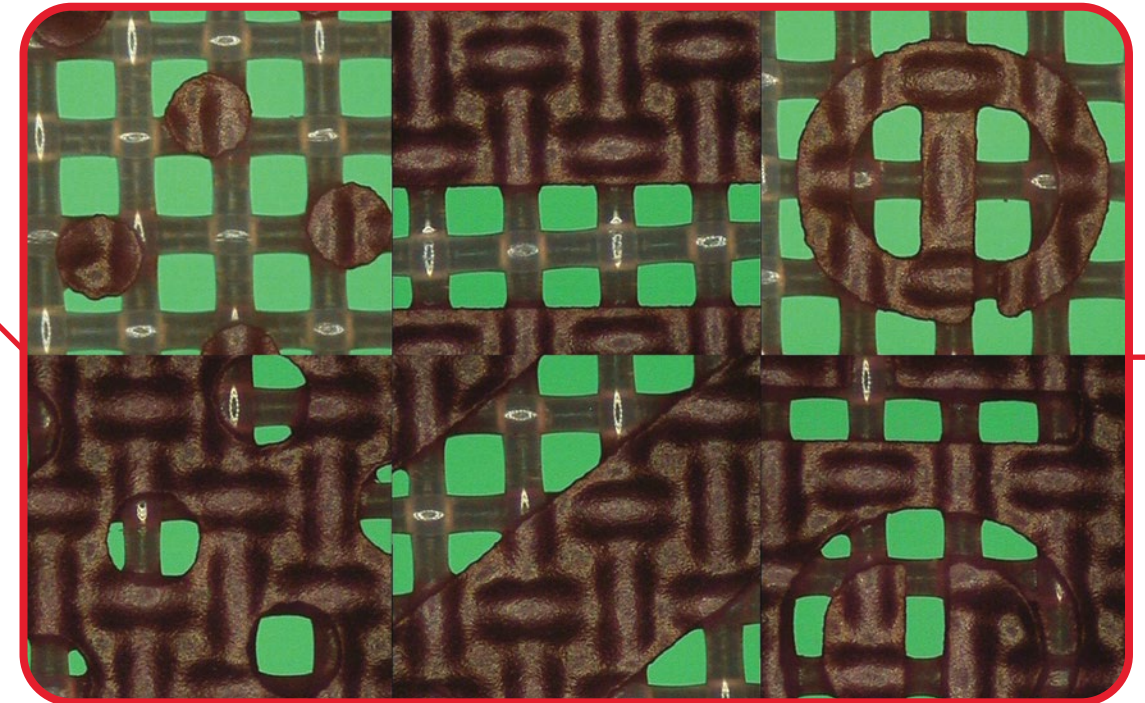
- Linear array of 96 Blu-Ray Lasers on a belt-driven head, the system is durable and requires minimal maintenance
- The targeted light wavelength of the lasers maximizes curing speed and minimizes both power consumption and heat generation
- LED Lasers last 10,000+ hours with 100% efficiency



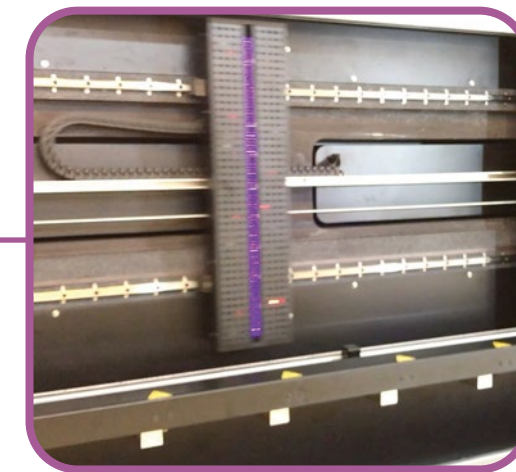
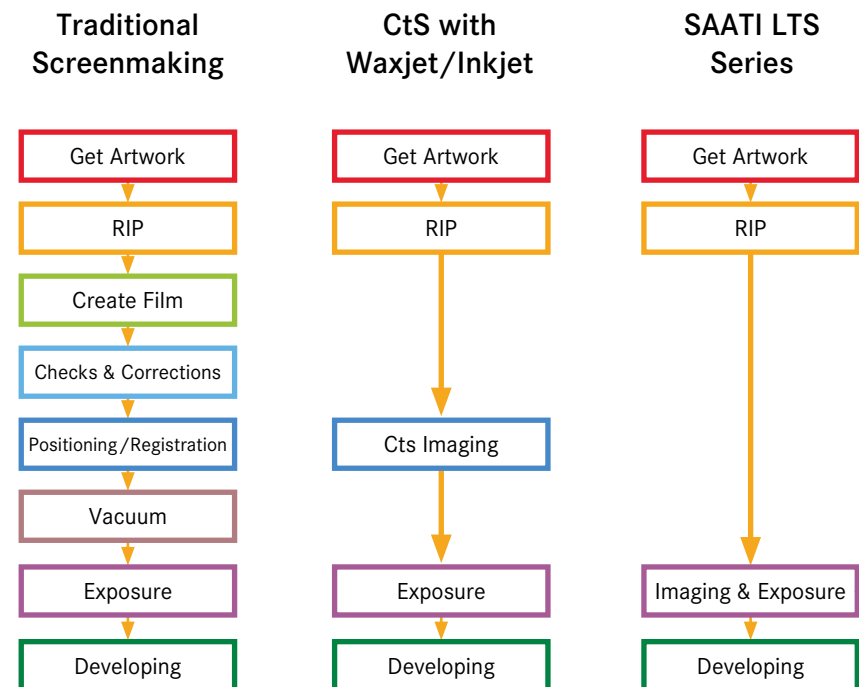
Resolution Settings

The SAATI LTS has five resolution resolution settings, each tailored to a different types of image requirements

847	1016	1270	1693	2540
Low Setting		Middle Setting		Highest Setting
<ul style="list-style-type: none"> • Fastest processing times • Superior to inkjet films 	<ul style="list-style-type: none"> • Superior to inkjet/waxjet resolution 	<ul style="list-style-type: none"> • Equivalent to DLE systems 	<ul style="list-style-type: none"> • Superior to many other DLE systems 	<ul style="list-style-type: none"> • Image setter quality for the most demanding applications

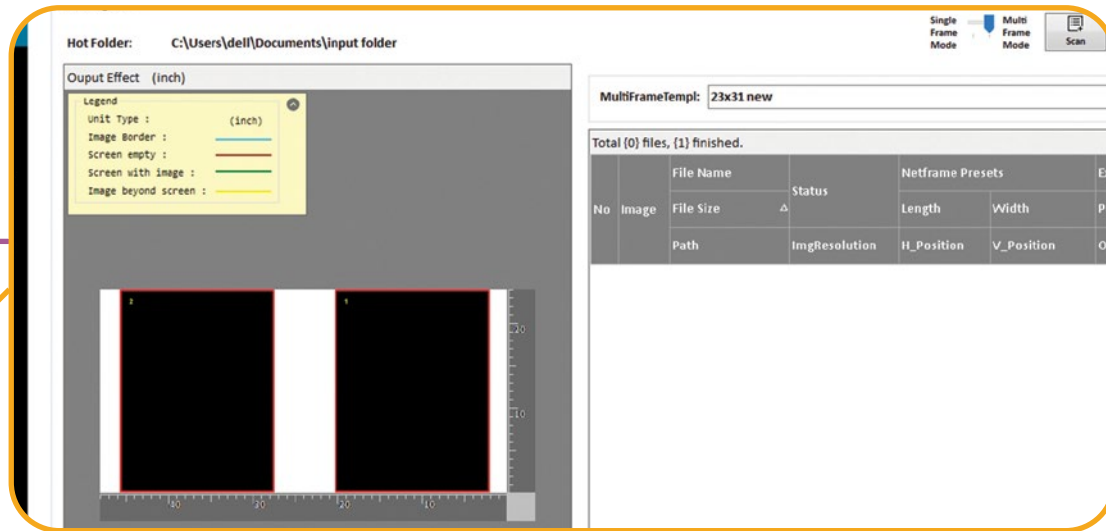


Improvements to Workflow

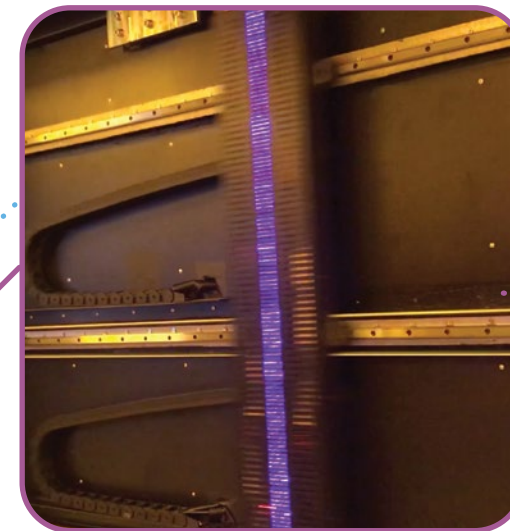
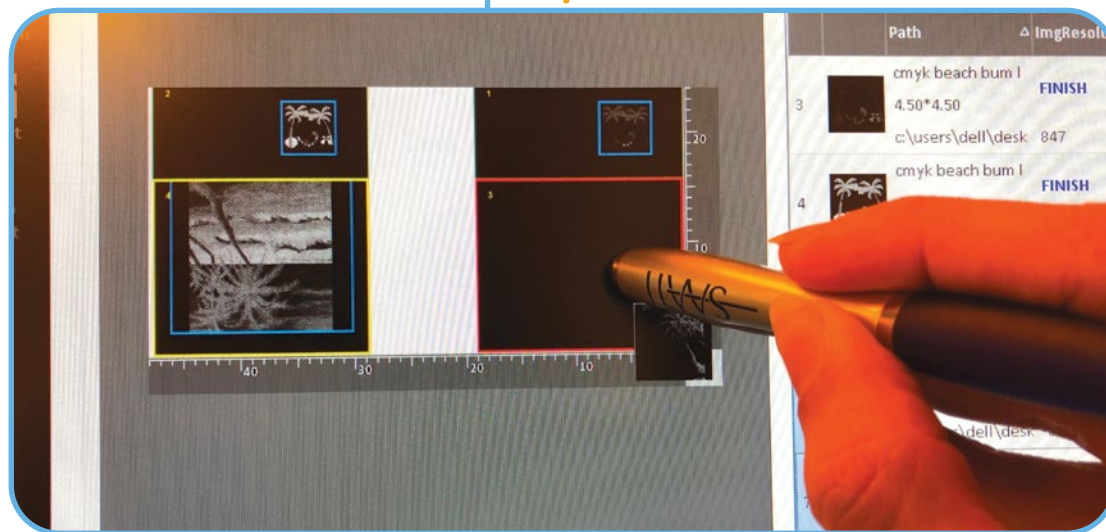


SAATI LTS 6080-VF

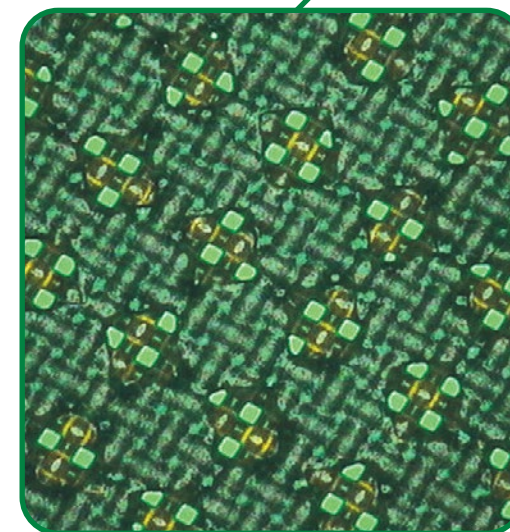
Workflow Capabilities



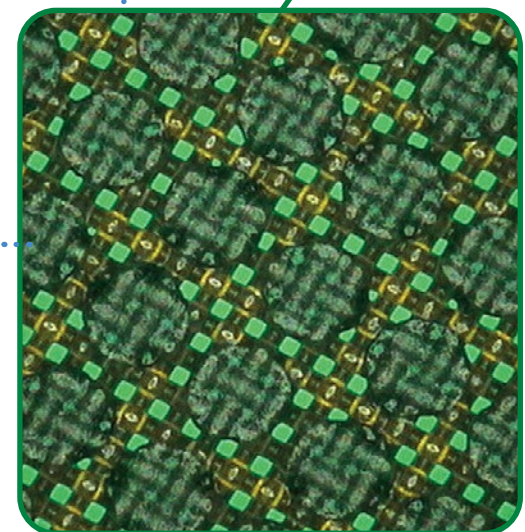
Precision placement of multiple art files across two screens



Laser array exposes images much more quickly than scrolling chip DLE or ink/waxjet that require subsequent exposure



120 LPI 40% dot on 380.31 YE

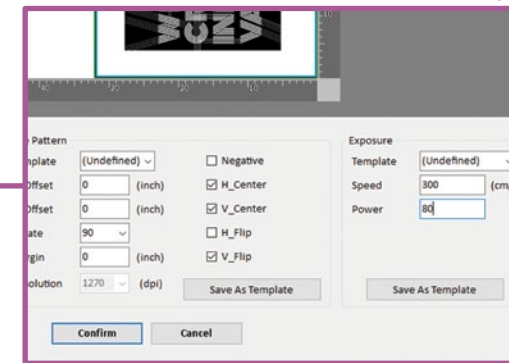


120 LPI 60% dot on 380.31 YE



User Friendly Layout System

- Set size & location of image(s) and define exposure area
- Place multiple stencil images across 1 or more screens with touchscreen or mouse
- Finalized layouts go to queue for easy work management



Exposure System

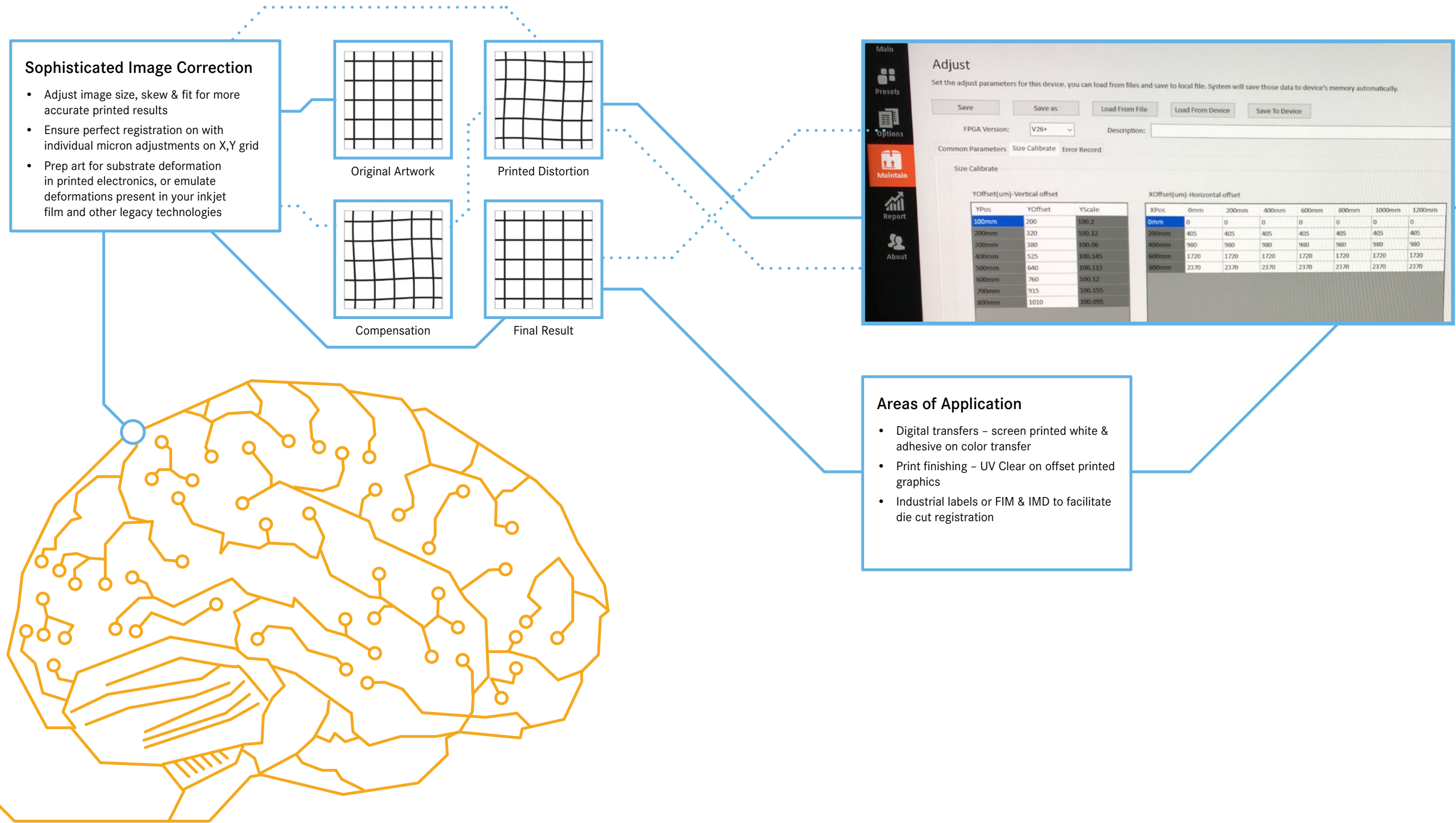
- Set the laser power and scan speed to effectively and thoroughly cure all emulsion and film types in under 3:00
- Customize settings and/or create standard templates for future use
- Proprietary file naming system automatically loads Netframe, Image Pattern & Exposure settings (not required)

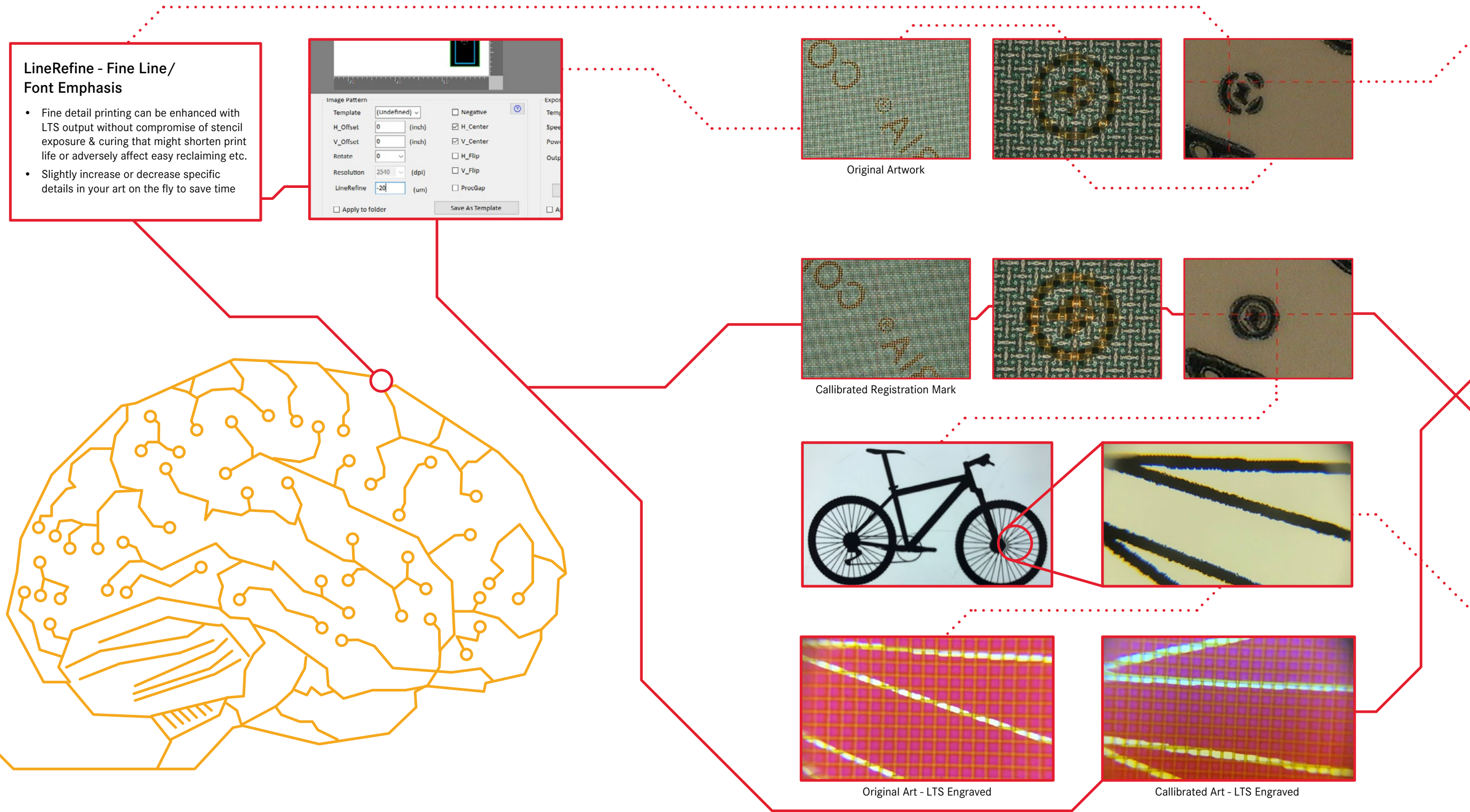
Power	Speed	Resolution	FrameLength	Exposures	Offset	Offset
30	200	2540	308	435	30.8	0
30	200	1270	185	435	0	0
300	200	1270	185	435	0	0
300	300	1270	185	435	0	0
30	300	2540	762	508	0	0
30	200	1270	762	508	0	0
30	300	1270	762	508	0	0
30	200	1270	762	508	0	0
30	200	1270	762	508	0	0
30	200	1270	762	508	0	0
30	20	1270	762	508	0	0
30	20	1270	762	508	0	0
30	20	1880	762	508	0	0
30	20	1270	762	508	0	0
30	200	1270	800	400	0	0

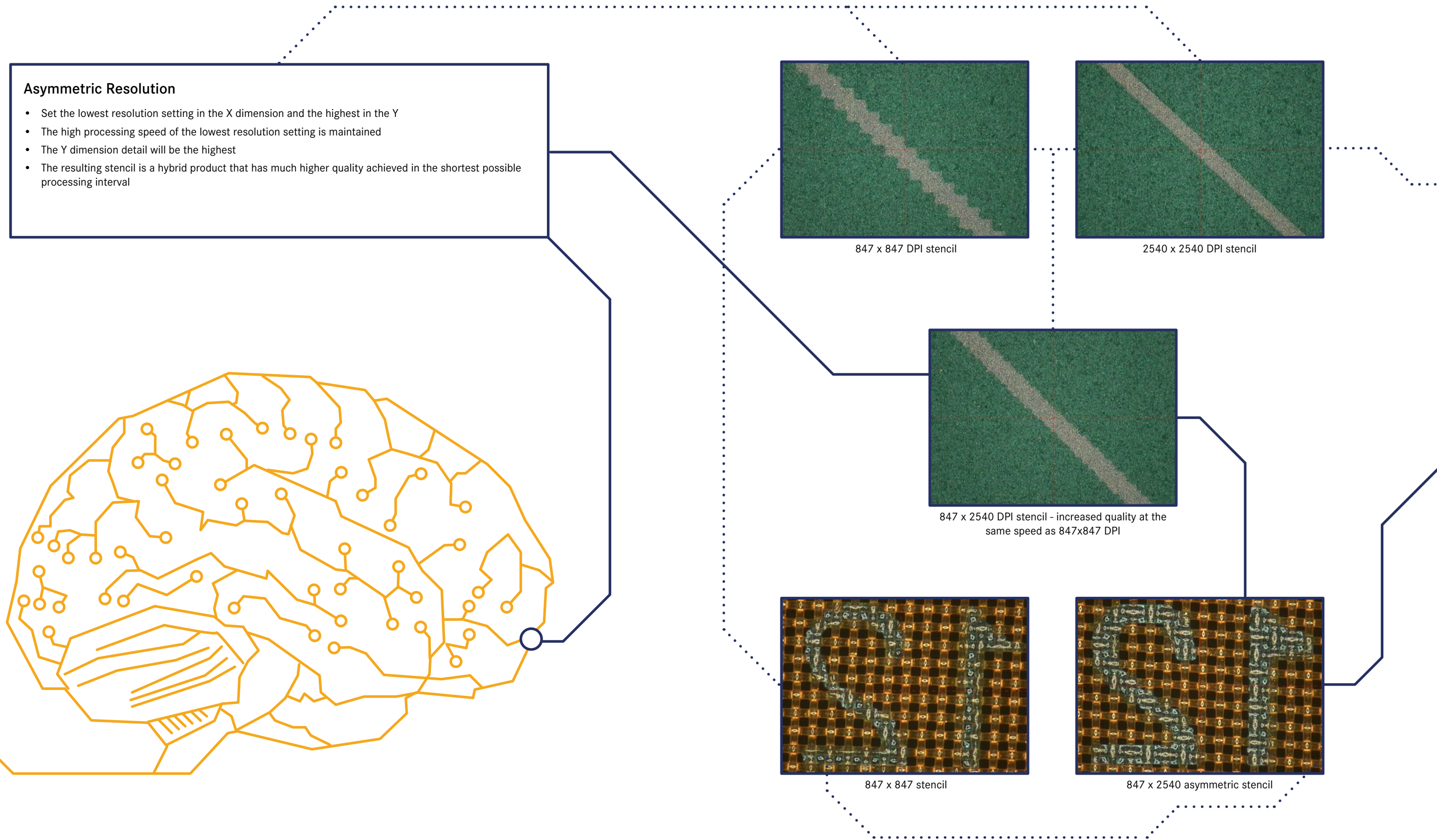
Create Your Own Archive

- Processed files settings are saved
- After screen imaging, layouts go to designated folder for archiving or deletion
- Create your own file archive for easy retrieval through the search function









Asymmetric Resolution

- Set the lowest resolution setting in the X dimension and the highest in the Y
- The high processing speed of the lowest resolution setting is maintained
- The Y dimension detail will be the highest
- The resulting stencil is a hybrid product that has much higher quality achieved in the shortest possible processing interval

847 x 847 DPI stencil

2540 x 2540 DPI stencil

847 x 2540 DPI stencil - increased quality at the same speed as 847x847 DPI

847 x 847 stencil

847 x 2540 asymmetric stencil

SAATI LTS 6080-VF

Alternative LTS Models



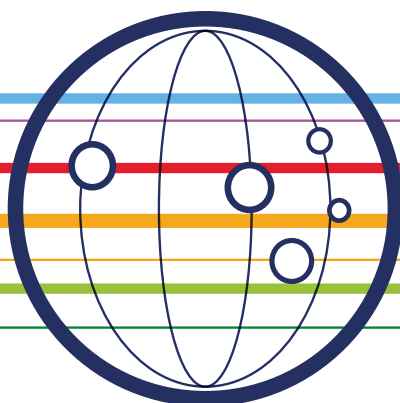
Machine	LTS 6080-VF	LTS 8012	LTS 1015
Number of Lasers	96	128	160
Resolution (dpi)	847 - 1016 - 1270 - 1693 - 2540		
Dimension	220 x 58 x 163 cm 86.6 x 22.8 x 64"	220 x 58 x 163 cm 86.6 x 22.8 x 64"	260 x 68 x 200 cm 102.4 x 26.8 x 78.7"
Weight	850 kg / 1874 lbs	925 kg / 2039 lbs	1200 kg / 2646 lbs
Maximum Image Size	60 x 120 cm 23.6 x 47.2"	80 x 120 cm 31.5 x 47.2"	100 x 150 cm 39.4 x 59.1"
Maximum Frame Size (Single)	104 x 167 cm 41 x 66"	115 x 167 cm 45 x 66.0"	140 x 200 cm 55 x 79"
Maximum Frame Sizes (Double)	58 x 78 cm 23 x 31"	64 x 91 cm 25 x 36"	64 x 91 cm 25 x 36"
Power Consumption	800 W	800 W	1000 W
Voltage	110/240 V		
Interface	USB 2.0		
Process Mode	Bi-Directional		
Stencil Materials	Most kinds of emulsion & film		
Maximum Emulsion Thickness	700 µm		
Repeatability	Less than 0.1 mm		
Sample Exposure Settings	Fabric Type Saatilene Hi-R 120.34 (305.34) Color: Yellow Power: 50 Emulsion: SAATIgraf CTS7 EOM: 9 µm DPI:1270 Speed: 300 SAATI 21-Step Exposure Level: Step 5 Time: Less than 3.5 Minutes		



SAATI LTS 6080

- Facedown glass panel with enclosing lid and safe viewing window
- 96 laser array
- Digitally register, image & expose several small screens simultaneously - perfect for electronics
- Total image area of up to 60 x 80 cm | 23.6 x 31.5"
- Comes with pneumatic clamp registration system, also adaptable to other systems
- Fits multiple small frames or one large frame up to 85 x 110 cm | 33.5 x 43.3"
- Dimensions: 167 x 82 x 93 cm | 65.7 x 32.3 x 36.6"
- Weight: 597 kg | 1316 lbs

We cross-innovate

**SAATI S.p.a**

Via Milano, 14
22070 Appiano Gentile (Co), Italy
Tel : +39 0319711
Fax: +39 031 933392
E-mail: info.it@saati.com

SAATI Americas Corp.

201 Fairview St. Extension
Fountain Inn, SC 29644
Toll-Free: +1 800 431 2200
Fax: +1 864 862 0089
E-mail: info.us@saati.com

SAATI Technical Fabrics (Tianjin) Co., Ltd.

Cross Of Saida 2nd Branch Road and Saida Century Avenue,
Xiqing Economic Development Area,
Tianjin, China 300385
Tel: +86 22 23960843
Fax: +86 22 23962116
E-mail: info.cn@saati.com

SAATI Deutschland GmbH

Ostring 22 46348 Raesfeld, Germany
Phone: +49 2865 95800
Fax: +49 2865 958010
E-mail: info.de@saati.com

SAATI Korea Ltd.

22, Dangjeong-ro, Gunpo-si Gyeonggi-do, 435-833, Korea
Phone: +82 31 429 9337
Fax: +82 31 429 9338

SAATI France

74 Route de Bapaume 80360 Saily Saillisel, France
Phone: +33 3 22 85 77 00
Fax: +33 3 22 85 77 00
E-mail: info.fr@saati.com

SAATI Serigrafía Ibérica, S.a.

Pol. Ind. El Mijares, C/ Industria, nº 13 12550
Almazora, Castellón, Spain
Phone: +34 964550688
Fax: +34 964551049
E-mail: info.es@saati.com

SAATI Russia

23 Shvetsova str. 198095 Saint-Petersburg, Russia
Phone: +79 062788343

Website

www.SAATI.com

v 05.11.20

—SAATI
We cross-innovate